

Walls Define
the Character of Every Space

FP **FITPANEL**[®]
— 3D WALL PANELS —

Hardy Amies
14 SAVILE ROW, LONDON







FP501



CODE	FP501
Width	216 mm
Height	2800 mm
Thickness	16 mm

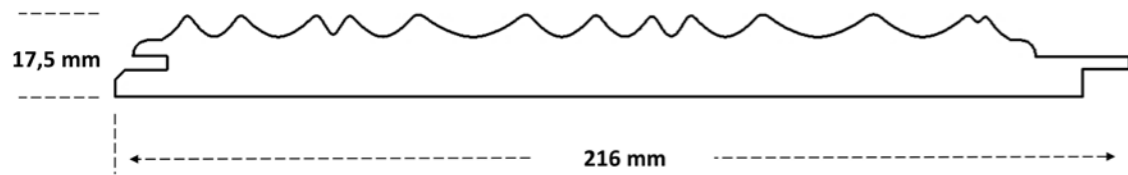
PACKAGE	FP501
Content	4 Pieces
Coverage	2.31 m ²
Weight	24.8 Kg







FP502



CODE	FP502
Width	216 mm
Height	2800 mm
Thickness	17.5 mm

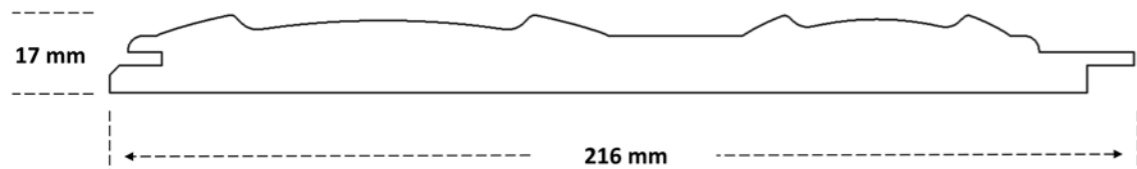
PACKAGE	FP502
Content	4 Pieces
Coverage	2.31 m ²
Weight	24.8 Kg





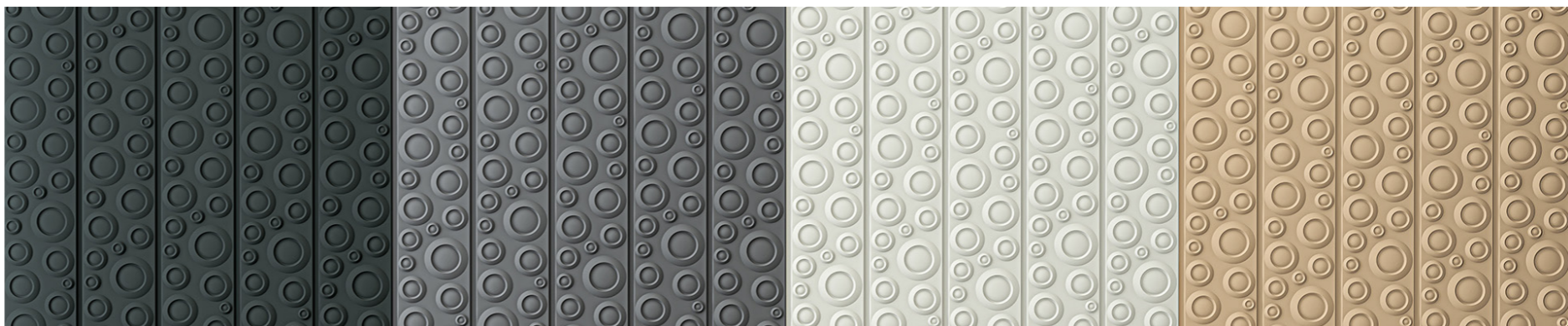


FP503



CODE	FP503
Width	216 mm
Height	2800 mm
Thickness	17 mm

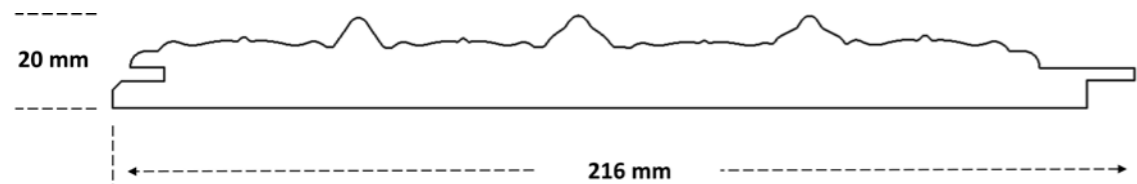
PACKAGE	FP503
Content	4 Pieces
Coverage	2.31 m ²
Weight	23.2 Kg





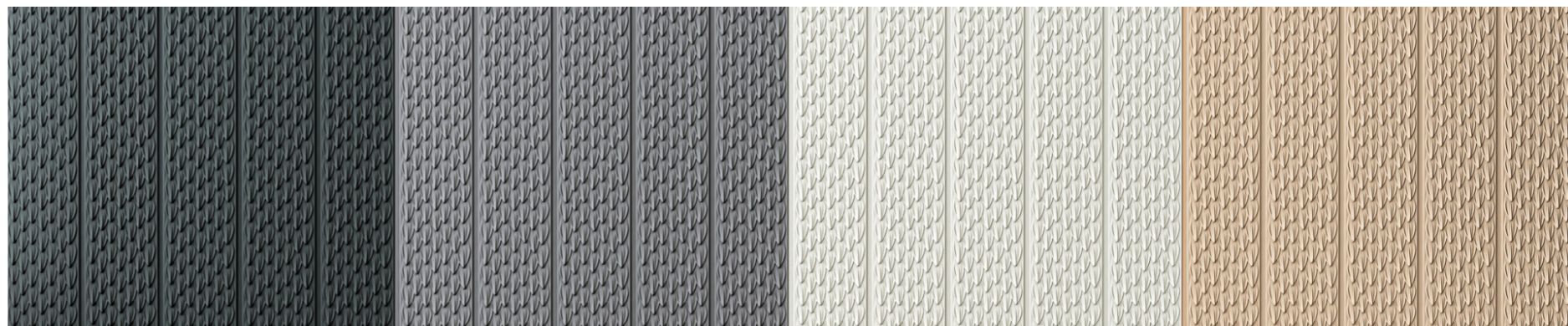


FP504



CODE	FP504
Width	216 mm
Height	2800 mm
Thickness	20 mm

PACKAGE	FP504
Content	4 Pieces
Coverage	2.31 m ²
Weight	24.4 Kg



FLEXIBLE FINISHING OPTIONS

Raw Panels

- ◇ Supplied unfinished for custom surface treatments.
- ◇ Surfaces are ready for painting; no additional sanding required.
- ◇ Suitable for a wide range of coating systems, including cellulosic, polyurethane, synthetic, acrylic, and water-based paints.

Membrane Finishes

- ◇ Delivered ready-to-install.
- ◇ Soft-touch membrane surface with a matte and smooth finish.
- ◇ Available in four standard colors.
- ◇ Resistant to fingerprints and scratches.
- ◇ A more durable alternative to painted surfaces, especially for high-traffic areas.



Storm Grey



Stone Grey



New Grey



Cappuccino

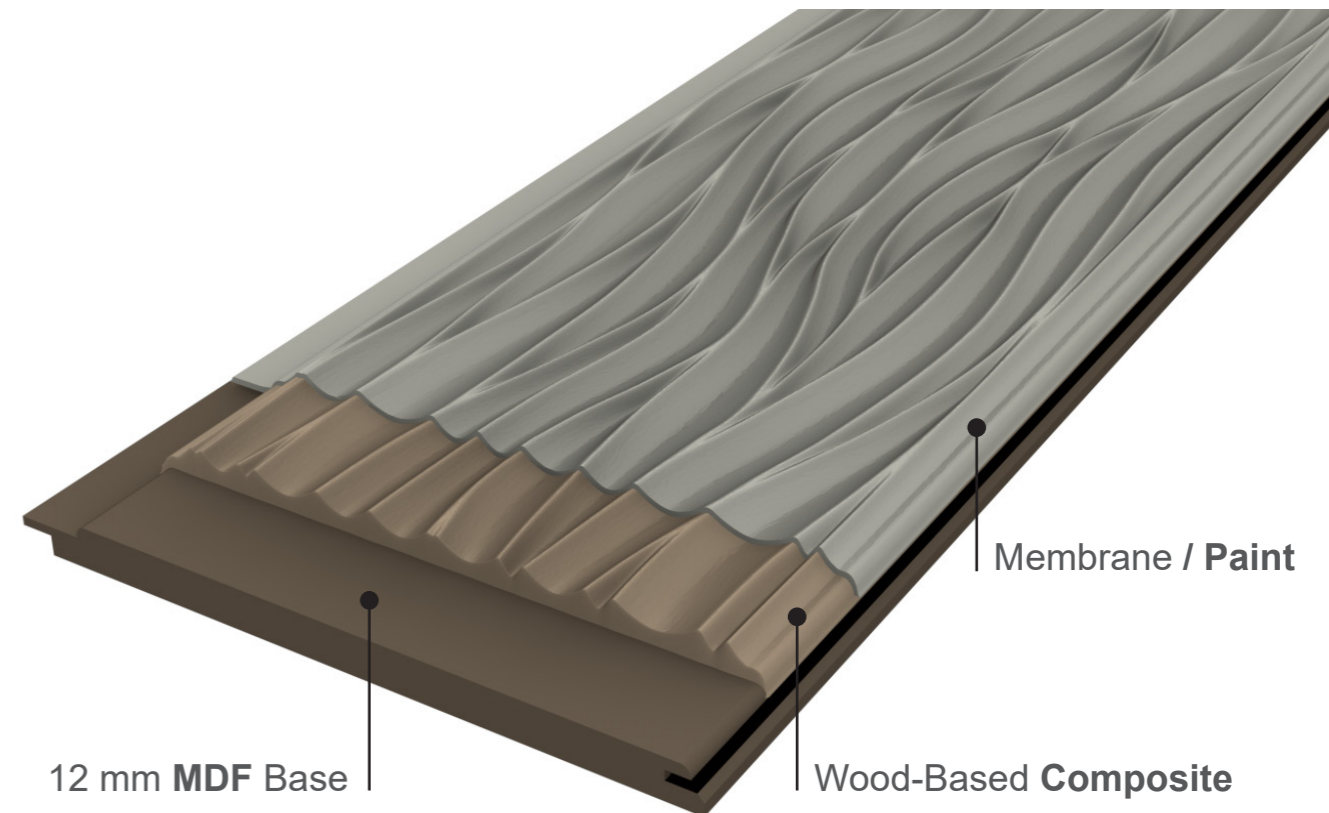
Custom Membrane Finishes

- ◇ Available upon request, with a minimum order quantity of 250 units.
- ◇ Custom membrane colors and thicknesses (0.20–0.50 mm) are available.

DIGITAL CONTENT

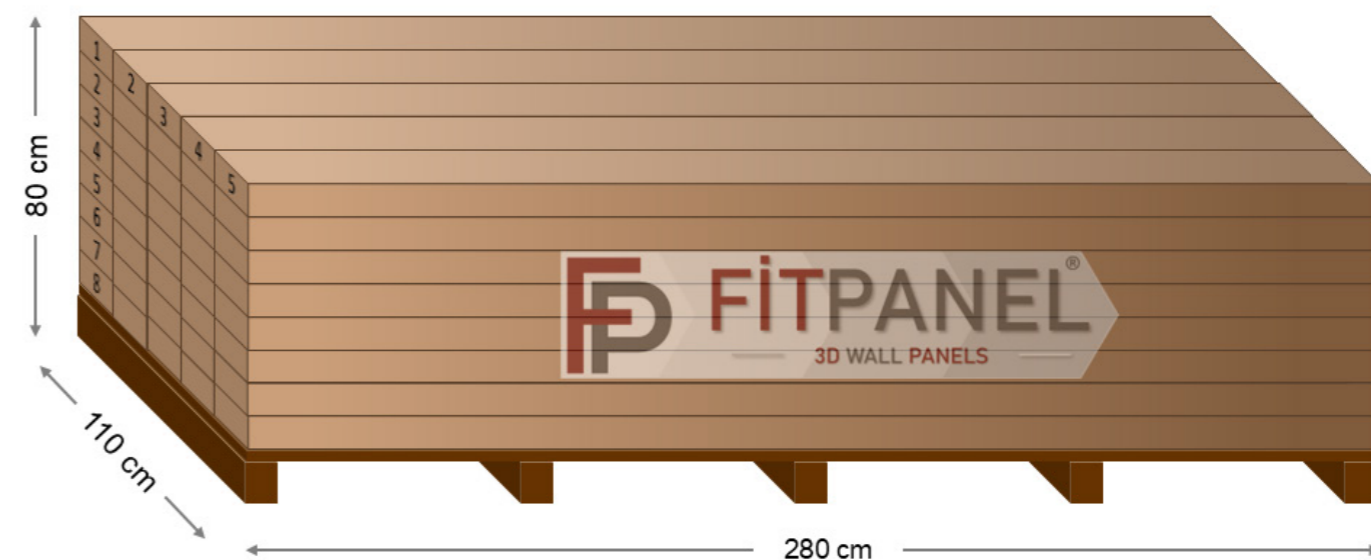
STL and 3ds Max model files are available upon request for designers and interior architects to integrate our products into their digital projects.

PANEL STRUCTURE



The **MDF** used in our products is manufactured in **ISO 9001:2015** certified facilities and features **E0** emission levels in accordance with **TS EN 717-1** standards. The production processes of both the **MDF** and the wood-based composite layer are **FSC** certified.

PALLET INFORMATION



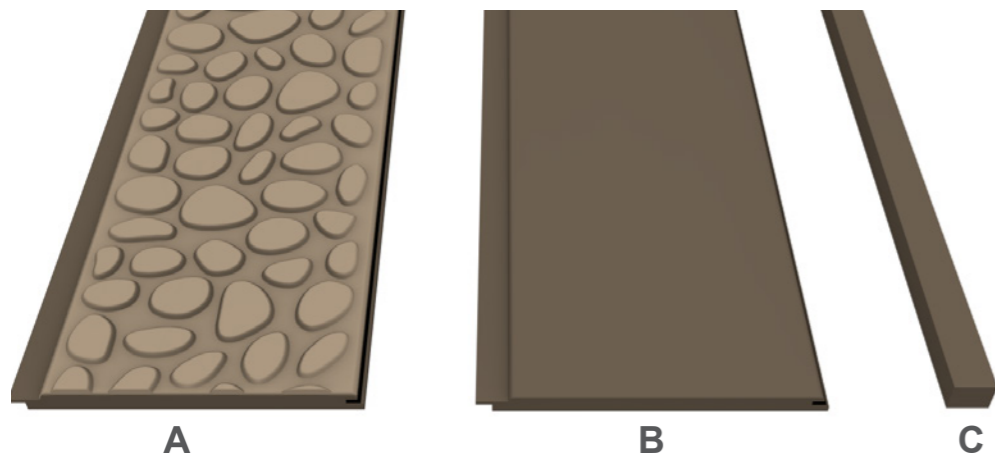
Each Pallet contains 8x5=40 Packs (160 Panels) - Approximate weight: 1050 kg

PARTS

A: 3D Wall Panel - 2800 x 216 x (16-20) mm

B: Flat Base Panel - 2800 x 216 x 12 mm

C: Starter & End Profile - 2800 x 30 x 22 mm

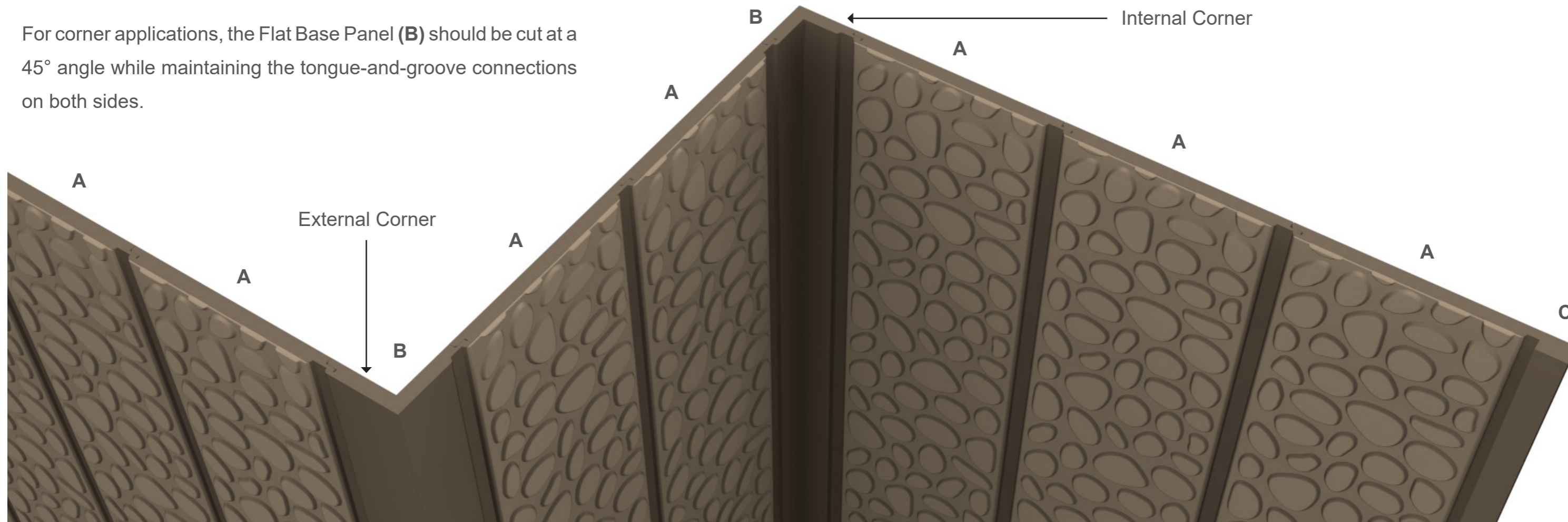


INSTALLATION NOTES

- ◇ Panels are connected using a tongue-and-groove system for quick and precise installation.
- ◇ Flat Base Panels (**B**) and Starter & End Profiles (**C**) are supplied separately, either raw or finished.
- ◇ If the wall surface is smooth and even:
 - Panels can be installed using suitable construction adhesives.
 - Polyurethane-based adhesives are recommended.
 - Unpainted (raw) wall surfaces provide better adhesion.
- ◇ If the wall surface is uneven or irregular:
 - A horizontal subframe (lath system) should be installed prior to panel installation.
 - Maximum spacing between laths: 60 cm.
 - Panels can be fixed using headless nails, wood adhesive, or a combination of both.

SAMPLE INSTALLATION INCLUDING CORNERS

For corner applications, the Flat Base Panel (**B**) should be cut at a 45° angle while maintaining the tongue-and-groove connections on both sides.



ARCHITECTURAL WALLS WITH REAL DEPTH



fitpanel3d.com